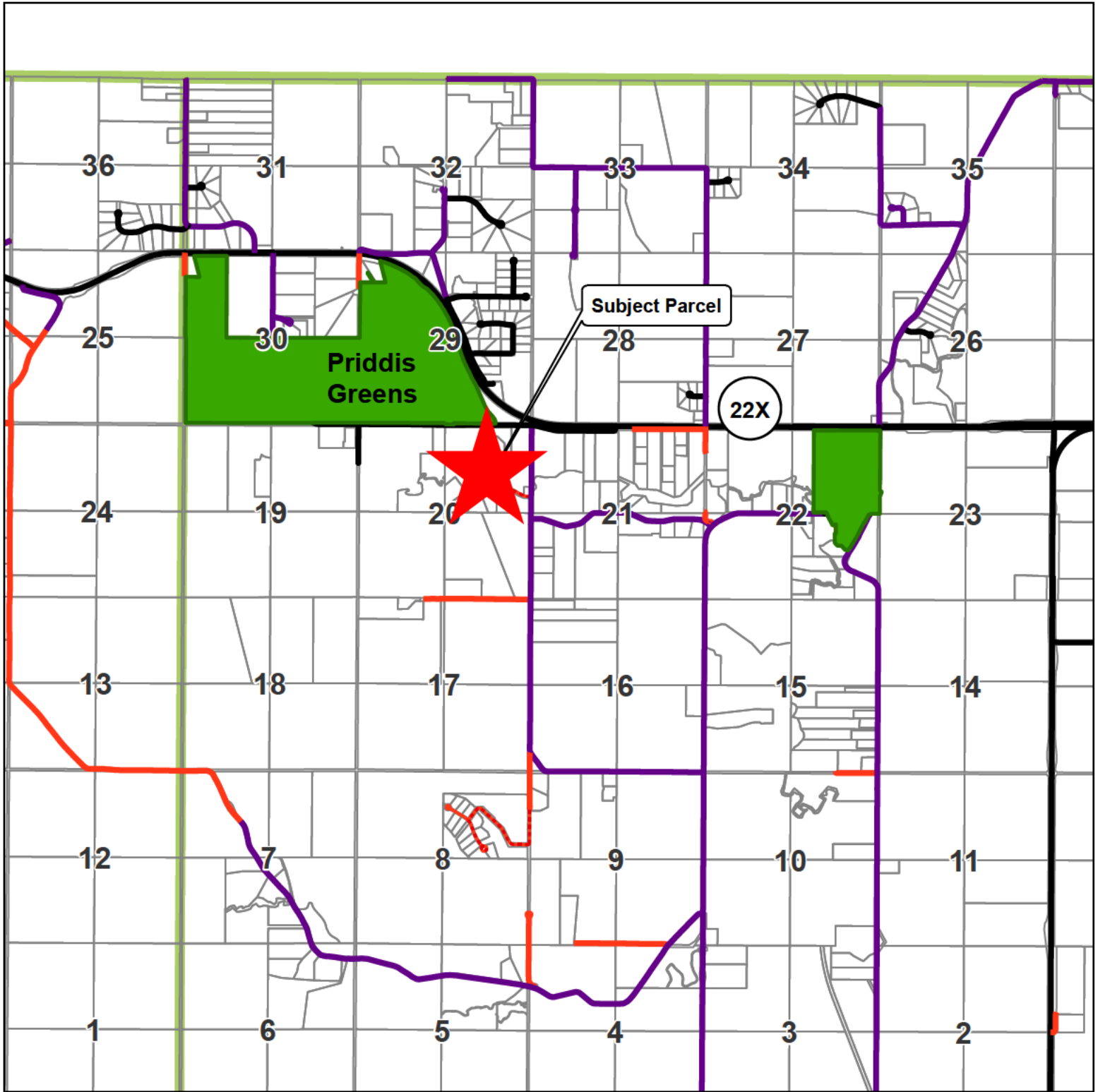


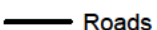
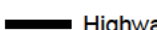





Closure of Road Plan within
NE 20-22-03 W5M
Council Division 4



1:50,000

Legend

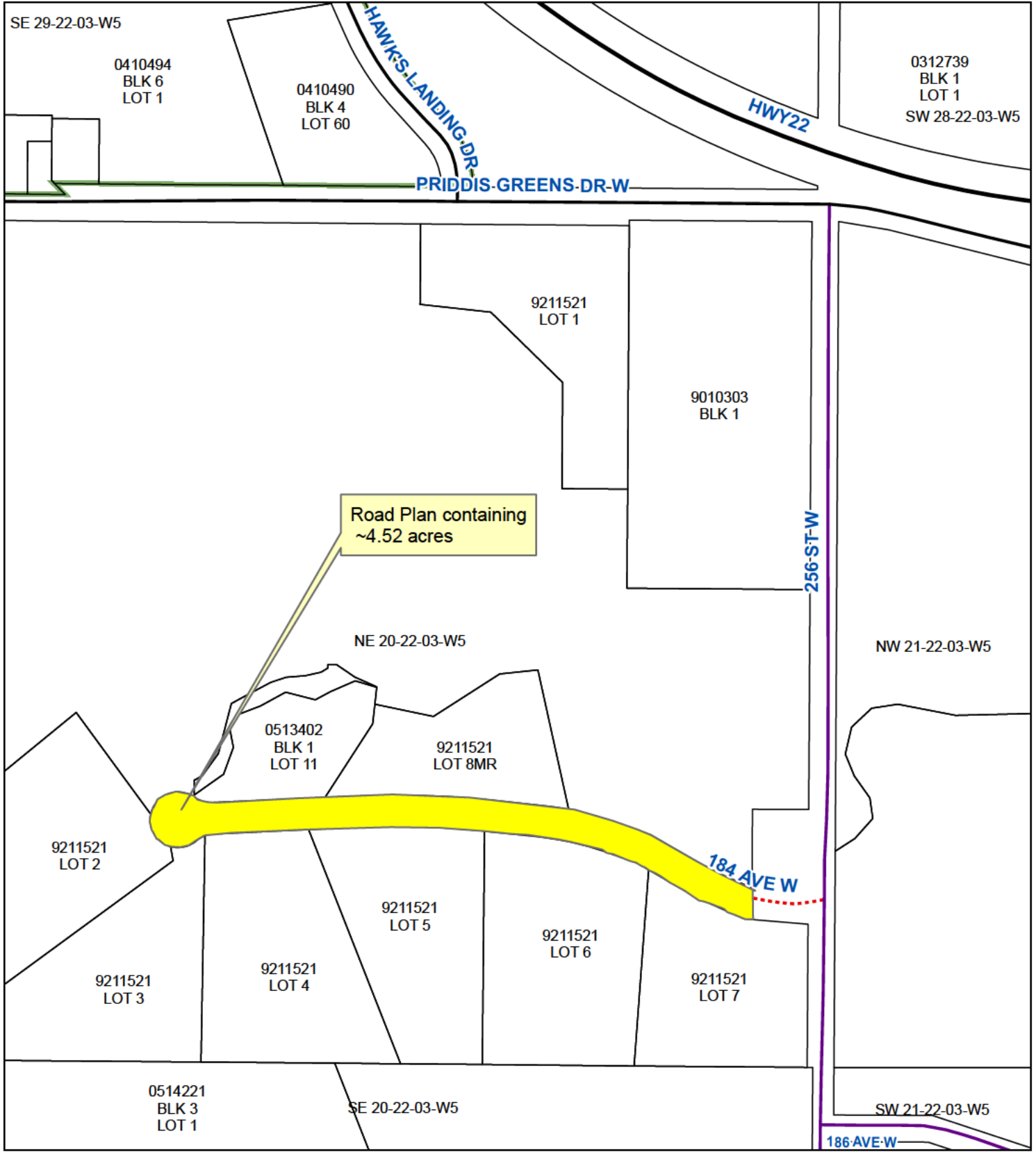
-  Roads
-  Highway
-  Subject undeveloped Road Allowance
-  Parcels
-  Applicant

This map is compiled by the Foothills County. Reproduction, in whole or in part, is prohibited without express permission from the Foothills County. Foothills County provides this information in good faith, but provides no warranty, nor accepts any liability arising from incorrect, incomplete or misleading information, or its improper use.

Data Sources Include Municipal Records and AltaLIS.
© Foothills County 2021

Date Printed: 2025-11-25

Closure of Road Plan within NE 20-22-03 W5M Council Division 4



Road Plan containing
~4.52 acres

- Legend
- Townships
 - Hamlet
 - Parcels

Not Survey Quality

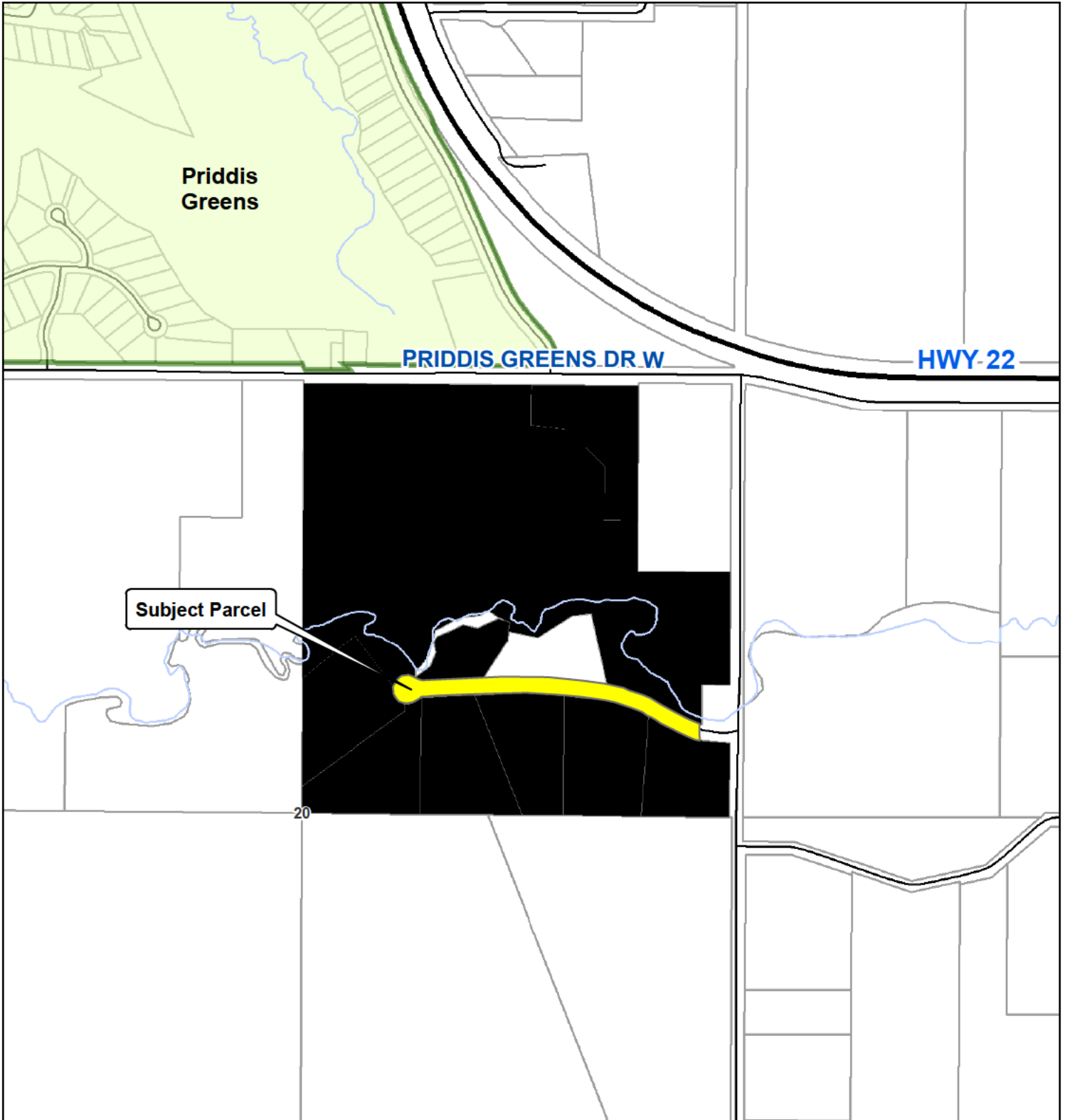
Date Printed: 2025-09-17

1:5,000

This map is compiled by the Foothills County. Reproduction, in whole or in part, is prohibited without express permission from the Foothills County. Foothills County provides this information in good faith, but provides no warranty, nor accepts any liability arising from incorrect, incomplete or misleading information, or its improper use.

Data Sources Include Municipal Records and AltaLIS.
© Foothills County 2025

Schedule: A



Legend

- Roads
- Highway
- Parcels
- Subject Parcel
- Hamlet

Date: 2025-11-24

0 0.25 0.5

This map is compiled by the Foothills County. Reproduction, in whole or in part, is prohibited without express permission from the Foothills County. Foothills County provides this information in good faith, but provides no warranty, nor accepts any liability arising from incorrect, incomplete or misleading information, or its improper use.

Data Sources Include Municipal Records and AltaLIS.
© Foothills