

Blowdown notification

Blowdown details

Date: Feb. 21-23, 2024 Time: 8 AM - 12 PM

Land location: NE 20-22-3 W5M

TC Energy land agent: Alan Bruinsma

Phone number: 403-605-2205

Onsite technician (blowdown co-ordinator): _____

Jan Verlaeckt

Cell number: 403-593-2021

Estimated duration of blowdown: 25 Minutes Twice / Day

Additional Notes: _____

At TC Energy, the safety of the public and our employees is a top priority. To ensure our pipeline system continues to meet the highest safety standards, we periodically perform routine maintenance as part of our Pipeline Integrity Maintenance Program. As part of this work, you may hear a sustained loud noise known as a “blowdown.”

A blowdown is the act of releasing natural gas from the pipeline system so work can be done safely on the depressurized facilities. TC Energy employees will close the required valves to isolate the facilities and then open a blowdown valve to safely depressurize in a controlled manner. A loud roaring sound may occur when the natural gas is released, although TC Energy may employ tools to minimize this noise whenever possible.



The sound during a blowdown can be as loud as an airplane engine and may last anywhere from a few minutes to multiple hours, depending on the amount of pipe being depressurized. As the flow of gas gradually slows down, the noise also lessens.

After the natural gas is released, a funnel-shaped air expeller is placed on top of the blowdown valve opening, which draws any remaining gas out and makes it safe for activities such as welding.

Once maintenance is complete, work begins to safely bring the line back into service. Natural gas is sent back into the pipeline and, once it reaches pressure, the blowdown valve is opened once again to vent the atmospheric air. Once all the air is removed, the blowdown valve is closed. The line is then pressurized to its normal operating pressure.

Blowdowns of different types occur regularly along our pipeline system, from long sections of large-diameter pipeline to above-ground compressor station maintenance. They are part of the safe maintenance and operation of our facilities. We recognize they can be an inconvenience for our neighbours and we do everything we can to minimize the effects. Residents living in close proximity to the planned blowdown location will receive notification of the blowdown prior to the work beginning.

If you have questions or concerns,
please contact TC Energy first.

General inquiries

450 – 1 Street S.W. Calgary, AB
Canada, T2P 5H1

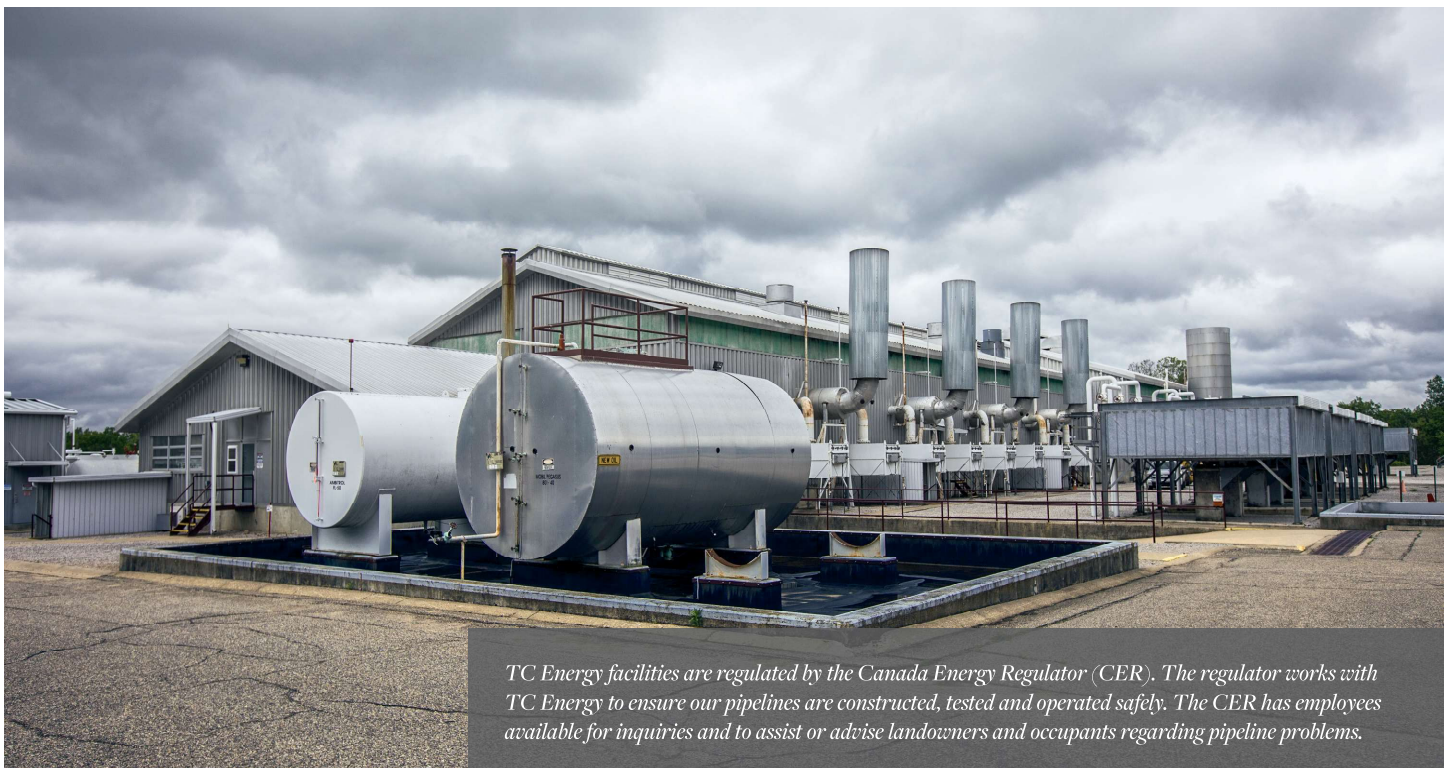
1-866-372-1601

(weekdays 7:30 a.m. to 5 p.m. MST)

cdn_landowner_help@tcenergy.com

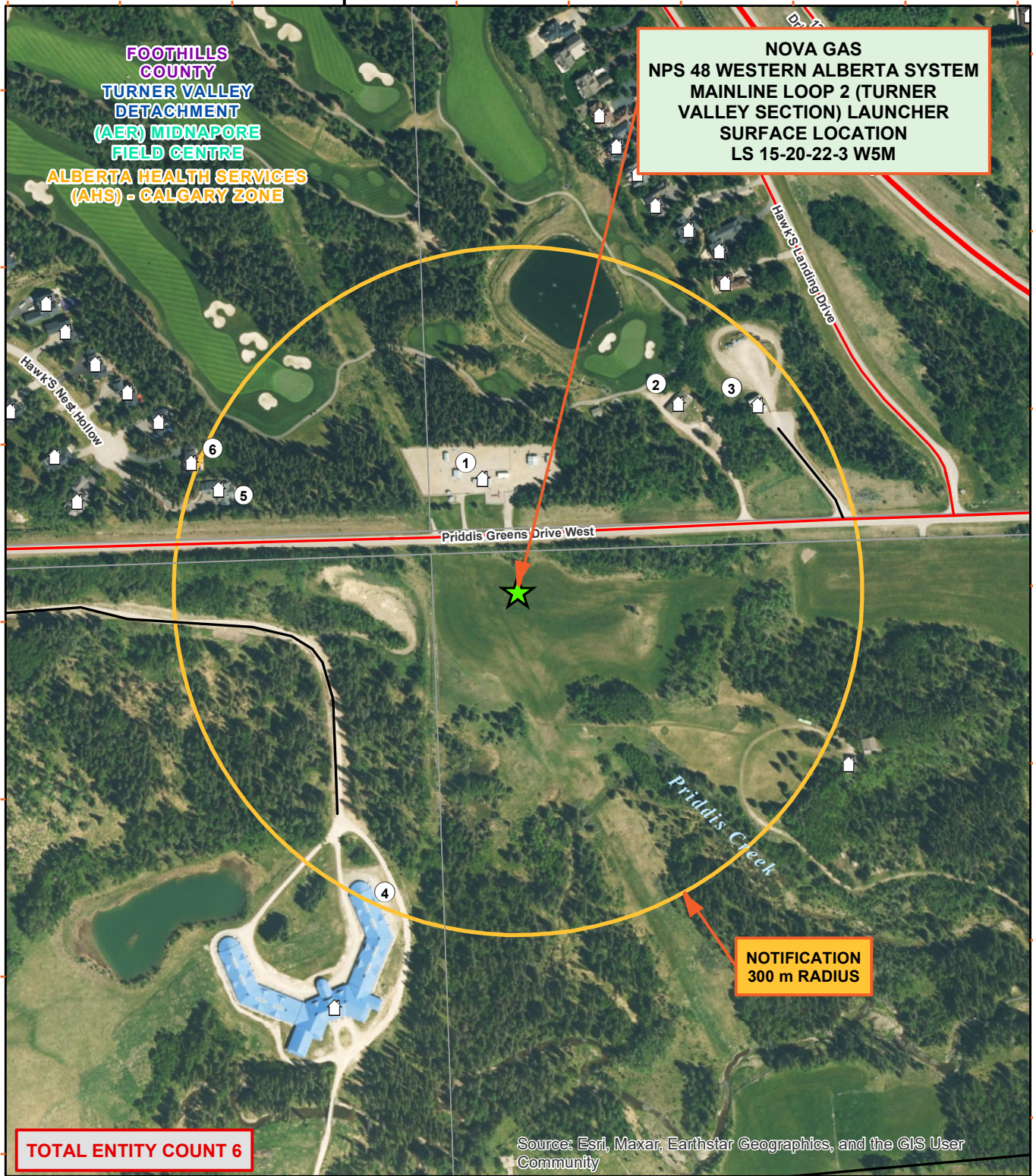
In case of a pipeline emergency, call:
1-888-982-7222

[TCEnergy.com](https://www.tcenergy.com)



TC Energy facilities are regulated by the Canada Energy Regulator (CER). The regulator works with TC Energy to ensure our pipelines are constructed, tested and operated safely. The CER has employees available for inquiries and to assist or advise landowners and occupants regarding pipeline problems.

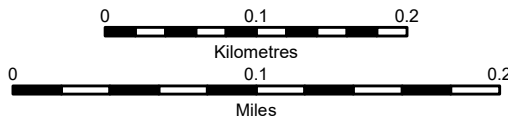
114.383333° W



114.383333° W

Legend

- Entities
- Gravel Road
- Paved Road
- Paved Highway



NOVA GAS TRANSMISSION LTD.
NPS 48 WESTERN ALBERTA SYSTEM
MAINLINE LOOP 2 (TURNER
VALLEY SECTION) LAUNCHER
SURFACE LOCATION
LS 15-20-22-3 W5M

NOTIFICATION MAP

Rev.	Description	Date	Prepared By:	evolve	Evolve Project #: 32948	Coordinate System: NAD 1983 UTM Zone 11N
		Date: January 22, 2024		SURFACE STRATEGIES INC.	Page: 1 of 1	Scale: 1:5,000